

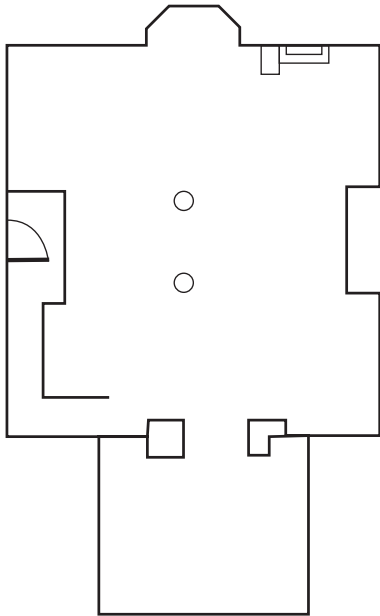
# Thomas Lounge



**1,925 square feet**

Located on the first floor of Oakham House, Thomas Lounge is our second largest room. Thomas Lounge offers a calm, cool and contemporary feel, with a stunning stone fireplace and a large solarium overlooking our patio.

Perfect for any kind of event, from a casual seminar to a formal celebration, Thomas Lounge has long been popular with all of our clients.



## Capacity and Style

- 11 round tables of 8 persons, seating 88
- Theatre style with 90 chairs
- Reception style holding 100 guests
- Hollow square for 33
- U-shape for 30
- Classroom style for 36

## Equipment Available

- 1 LCD projector and screen
- 1 PA system
- 2 wireless microphones (1 hand-held only, 1 lapel)
- 1 podium
- Bar set-up available\*
- Wireless/wired Internet

\* Subject to Limitations